



# MILLER

TYRES

ULTIMATE  
DRIVING  
PERFORMANCE



Product Catalogue



With over half a century of experience in the tyre industry, we are proud to introduce our range of MILLER Tyres produced using latest technology and cutting-edge engineering.

Miller Tyres have been manufactured under stringent quality control systems: DOT, ECE, JIS, CCC, GCC, INMETRO, ISO9001, QS9000 and Q1 certification ensuring safety, ultimate performance, driving comfort and unsurpassed quality.



The ever expanding range of MILLER Tyres currently covers Motorcycle, ATV, Car, Van, Pickup, SUV, Light Truck, Bus, Heavy Truck, Earthmover, Agricultural and Industrial Tyres.

MILLER Tyres provide a package of favorable business opportunity to growing network of distributors with the following long term facilities:

- Wide Range
- Best Quality
- Reasonable Pricing
- Timely Delivery
- Warranty
- Exclusivity
- Reliability

MILLER Tyres are represented and distributed in many countries, thanks to its unsurpassed quality, innovation and distributorship protection.

In a bid to further expand our reach in different markets, we are always in a look out for strategic alliances, therefore we invite you to apply for MILLER distributorship.





**06-14 Truck and Bus Radial Tyres**

**15-19 Earthmover Radial Tyres**

**20-25 Earthmover Bias Tyres**

**26-27 Agricultural Tyres**

**27 Industrial Tyres**

**28 Warranty**

**29-30 Distributorship**

# TRUCK & BUS RADIAL



ML198

ML278

ML501

ML504

ML506

ML510



ML512

ML518

ML518+

ML520

ML588

ML601

ML603



ML680

ML818

ML268

ML701

ML706

ML708

ML712



ML716

ML718

ML728

ML798

ML850

ML866

ML868

PATTE RN INDEX

# EARTHMOVER / INDUSTRIAL AGRICULTURAL



PATENTED INDEX

# Truck & Bus Radial



- High resilience rubber formula provides cooler running performance.
- Anti-wear rubber tread formula provides high wear resistance, puncture prevention and longer life.
- High quality reinforcing bead provides stress distribution for heavier work.
- Zero degree radial belt gives excellent impact resistance, high-speed performance and a guaranteed uniform wear.
- High strength steel belts, steel cord and inner radial ply make the Miller Tyre a top quality tyre.



## ML198

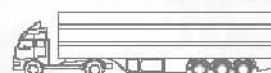


### Recommended Vehicle Types & Positions

Tyre Size	PR	LI/SS	Type	Standard Rim	Overall Diameter		Section Width		Thread Depth		Load				Pressure			
					mm	inch	mm	inch	mm	inch	S(kg)	D(kg)	S(lbs)	D(lbs)	S(kPa)	D(kPa)	S(psi)	D(psi)
7.50R16	14	122/118L	T/T	6.00G	805	31.7	215	8.5	12	15	1495	1310	3289	2882	740	740	107	107
7.50R20	14	130/125L	T/T	6.00	935	36.8	215	8.4	14	18	1885	1655	4147	3641	840	770	121	111
8.25R16	14	126/122L	T/T	6.50G	855	33.6	235	9.2	12	15	1705	1500	3751	3300	670	670	97	97
8.25R20	14	135/131L	T/T	6.50	971	38.2	232	9.1	14.5	18.6	2205	1940	4851	4268	840	770	111	111

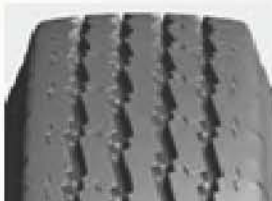


## ML278



### Recommended Vehicle Types & Positions

Tyre Size	PR	LI/SS	Type	Standard Rim	Overall Diameter		Section Width		Thread Depth		Load				Pressure			
					mm	inch	mm	inch	mm	inch	S(kg)	D(kg)	S(lbs)	D(lbs)	S(kPa)	D(kPa)	S(psi)	D(psi)
11R22.5	16	146/143M	T/L	8.25	1050	41.3	279	10.9	14.5	18.6	3000	2725	6600	5995	830	830	1826	1826
315/80R22.5	16	151/148M	T/L	9.00	1076	43.3	312	12.2	16.5	20.6	3450	3150	7590	6930	760	760	1672	1672



## ML501

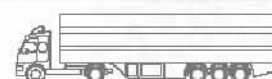
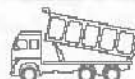


### Recommended Vehicle Types & Positions

Tyre Size	PR	LI/SS	Type	Standard Rim	Overall Diameter		Section Width		Thread Depth		Load				Pressure			
					mm	inch	mm	inch	mm	inch	S(kg)	D(kg)	S(lbs)	D(lbs)	S(kPa)	D(kPa)	S(psi)	D(psi)
7.50R20	14	100/125K	T/T	6.00	935	36.8	215	8.5	13	16	1885	1655	4150	3665	840	770	120	110
10.00R20	16	146/143L	T/T	7.50	1054	41.5	278	10.9	15	19	3000	2725	6610	6010	830	830	120	120
10.00R20	18	149/146K	T/T	7.50	1054	41.5	278	10.9	15	19	3250	3000	7165	6610	930	930	135	135
11R22.5	14	144/142M	T/L	8.25	1054	41.5	279	11.0	15	19	2800	2650	6175	5840	720	720	105	105
11R22.5	16	148/145M	T/L	8.25	1054	41.5	279	11.0	15	19	3150	2900	6945	6395	840	840	120	120
11R24.5	14	146/143L	T/L	8.25	1104	43.5	279	11.0	15	19	3000	2725	6610	6005	720	720	105	105
11R24.5	16	149/146L	T/L	8.25	1104	43.5	279	11.0	10.5	13	3250	3000	7160	6610	830	830	120	120

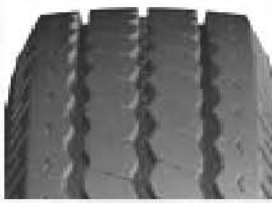


## ML504



### Recommended Vehicle Types & Positions

Tyre Size	PR	LI/SS	Type	Standard Rim	Overall Diameter		Section Width		Thread Depth		Load				Pressure			
					mm	inch	mm	inch	mm	inch	S(kg)	D(kg)	S(lbs)	D(lbs)	S(kPa)	D(kPa)	S(psi)	D(psi)
12R22.5	16	150/147L	T/L	9.00	1085	42.7	300	11.8	15	19	3350	3075	7390	6780	830	830	120	120
295/80R22.5	18	152/150M	T/L	9.00	1044	41.1	298	11.7	15	19	3550	3350	7825	7390	850	850	125	125
315/80R22.5	18	154/151L	T/L	9.00	1076	42.4	312	12.3	15	19	3750	3450	8270	7610	830	830	120	120
315/80R22.5	20	156/153K	T/L	9.00	1076	42.4	312	12.3	15	19	4000	3650	8820	8045	850	850	125	125



## ML506



Recommended Vehicle Types & Positions

Tyre Size	PR	L/S/S	Type	Standard Rim	Overall Diameter		Section Width		Thread Depth		Load				Pressure			
					mm	inch	mm	inch	mm	inch	S(kg)	D(kg)	S(lbs)	D(lbs)	S(kPa)	D(kPa)	S(psi)	D(psi)
*10.00R20	16	146/143L	T/T	7.50	1054	41.5	278	10.9	14	18	3000	2725	6610	6010	830	830	120	120
*10.00R20	18	149/146K	T/T	7.50	1054	41.5	278	10.9	14	18	3250	3000	7165	6610	930	930	135	135



## ML510



Recommended Vehicle Types & Positions

Tyre Size	PR	L/S/S	Type	Standard Rim	Overall Diameter		Section Width		Thread Depth		Load				Pressure			
					mm	inch	mm	inch	mm	inch	S(kg)	D(kg)	S(lbs)	D(lbs)	S(kPa)	D(kPa)	S(psi)	D(psi)
8.25R16	14	126/122L	T/T	6.50H	855	33.7	235	9.3	12	15	1700	1500	3750	3310	670	670	97	97
8.25R16	16	128/124K	T/T	6.50H	855	33.7	235	9.3	12	15	1800	1600	3970	3530	770	770	110	110



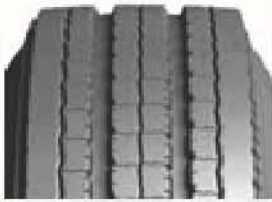
## ML512



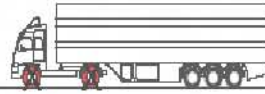
Recommended Vehicle Types & Positions

Tyre Size	PR	L/S/S	Type	Standard Rim	Overall Diameter		Section Width		Thread Depth		Load				Pressure			
					mm	inch	mm	inch	mm	inch	S(kg)	D(kg)	S(lbs)	D(lbs)	S(kPa)	D(kPa)	S(psi)	D(psi)
215/75R17.5	14	126/124M	T/L	6.00	767	30.2	211	8.3	12.5	16	1700	1600	3750	3530	700	700	101	101
215/75R17.5	16	135/133J	T/L	6.00	767	30.2	211	8.3	12.5	16	2180	2060	4805	4540	865	865	125	125
235/75R17.5	18	143/141J	T/L	6.75	797	31.4	233	9.2	12.5	16	2725	2575	6005	5675	865	865	125	125
225/70R19.5	12	125/123M	T/L	6.75	811	31.9	226	8.9	12.5	16	1650	1550	3640	3415	660	660	95	95
245/70R19.5	16	136/134M	T/L	7.50	839	33.0	248	9.8	12.5	16	2240	2120	4940	4675	760	760	110	110
255/70R22.5	16	140/137M	T/L	7.50	930	36.6	255	10.0	13.5	17	2500	2300	5510	5070	830	830	120	120
265/70R22.5	14	137/134M	T/L	7.50	867	34.1	262	10.3	13.5	17	2300	2120	5070	4675	760	760	110	110
265/70R22.5	16	140/138M	T/L	7.50	867	34.1	262	10.3	13.5	17	2500	2360	5510	5200	760	760	110	110
275/70R22.5	16	148/145M	T/L	8.25	958	37.7	276	10.9	15.5	20	3150	2900	6940	6395	900	900	130	130
12R22.5	16	150/147L	T/L	9.00	1085	42.7	300	11.8	15	19	3350	3075	7390	6780	830	830	120	120
295/80R22.5	18	152/150M	T/L	9.00	1044	41.1	298	11.7	15	19	3550	3350	7825	7390	850	850	125	125
315/80R22.5	18	154/151L	T/L	9.00	1076	42.4	312	12.3	15	19	3750	3450	8270	7610	830	830	120	120





## ML518



### Recommended Vehicle Types & Positions

Tyre Size	PR	L/SS	Type	Standard Rim	Overall Diameter		Section Width		Thread Depth		Load				Pressure			
					mm	inch	mm	inch	mm	inch	S(kg)	D(kg)	S(lbs)	D(lbs)	S(kPa)	D(kPa)	S(psi)	D(psi)
11R22.5	14	144/142M	T/L	8.25	1054	41.5	279	11.0	11	14	2800	2650	6175	5840	720	720	105	105
11R24.5	14	146/143L	T/L	8.25	1104	43.5	279	11.0	10.5	13	3000	2725	6610	6005	720	720	105	105
11R24.5	16	149/146L	T/L	8.25	1104	43.5	279	11.0	10.5	13	3250	3000	7160	6610	830	830	120	120
295/75R22.5	14	144/141M	T/L	9.00	1014	39.9	298	11.7	10.5	13	2800	2575	6175	5675	760	760	110	110
285/75R24.5	14	144/141L	T/L	8.25	1050	41.3	283	11.1	10.5	13	2800	2575	6175	5675	760	760	110	110



## ML518+



### Recommended Vehicle Types & Positions

Tyre Size	PR	L/SS	Type	Standard Rim	Overall Diameter		Section Width		Thread Depth		Load				Pressure			
					mm	inch	mm	inch	mm	inch	S(kg)	D(kg)	S(lbs)	D(lbs)	S(kPa)	D(kPa)	S(psi)	D(psi)
11R22.5	14	144/142M	T/L	8.25	1054	41.5	279	11.0	11	14	2800	2650	6175	5840	720	720	105	105
11R24.5	14	146/143L	T/L	8.25	1104	43.5	279	11.0	10.5	13	3000	2725	6610	6005	720	720	105	105
11R24.5	16	149/146L	T/L	8.25	1104	43.5	279	11.0	10.5	13	3250	3000	7160	6610	830	830	120	120
295/75R22.5	14	144/141M	T/L	9.00	1014	39.9	298	11.7	10.5	13	2800	2575	6175	5675	760	760	110	110
285/75R24.5	14	144/141L	T/L	8.25	1050	41.3	283	11.1	10.5	13	2800	2575	6175	5675	760	760	110	110



## ML520

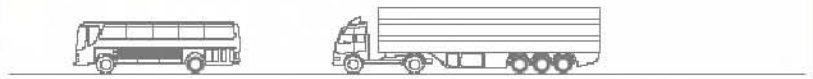


### Recommended Vehicle Types & Positions

Tyre Size	PR	L/SS	Type	Standard Rim	Overall Diameter		Section Width		Thread Depth		Load				Pressure			
					mm	inch	mm	inch	mm	inch	S(kg)	D(kg)	S(lbs)	D(lbs)	S(kPa)	D(kPa)	S(psi)	D(psi)
385/65R22.5	20	158L/160K	T/L	11.75	1072	42.2	389	15.3	16	20	4500	-	9920	-	830	-	120	-
425/65R22.5	20	165K	T/L	12.25	1124	44.3	422	16.6	16	20	5150	-	11400	-	830	-	120	-

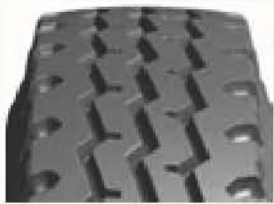


## ML588



Recommended Vehicle Types & Positions

Tyre Size	PR	LI/SS	Type	Standard Rim	Overall Diameter		Section Width		Thread Depth		Load				Pressure			
					mm	inch	mm	inch	mm	inch	S(kg)	D(kg)	S(lbs)	D(lbs)	S(kPa)	D(kPa)	S(psi)	D(psi)
10.00R20	16	146/143L	T/T	7.50	1054	41.5	278	10.9	15	19	3000	2725	6610	6010	830	830	120	120
10.00R20	18	149/146K	T/T	7.50	1054	41.5	278	10.9	15	19	3250	3000	7165	6610	930	930	135	135
11R22.5	14	144/142M	T/L	8.25	1054	41.5	279	11.0	15	19	2800	2650	6175	5840	720	720	105	105
11R22.5	16	148/145M	T/L	8.25	1054	41.5	279	11.0	15	19	3150	2900	6945	6395	840	840	120	120
11R24.5	14	146/143M	T/L	8.25	1104	43.5	279	11.0	15	19	3000	2725	6610	6005	720	720	105	105
11R24.5	16	149/146M	T/L	8.25	1104	43.5	279	11.0	15	19	3250	3000	7160	6610	830	830	120	120
295/75R22.5	14	144/141M	T/L	9.00	1014	39.9	298	11.7	15	19	2800	2575	6175	5675	760	760	110	110
285/75R24.5	14	144/141M	T/L	8.25	1050	41.3	283	11.1	15	19	2800	2575	6175	5675	760	760	110	110
12R22.5	16	150/147L	T/L	9.00	1085	42.7	300	11.8	15	19	3350	3075	7390	6780	830	830	120	120
315/70R22.5	18	152/148M (154/150L)	T/L	9.00	1016	40.0	308	12.1	15	19	3550	3150	7825	6945	850	850	125	125
295/80R22.5	18	152/150M	T/L	9.00	1044	41.1	298	11.7	16	20	3550	3150	7825	6945	850	850	125	125
315/80R22.5	18	154/151L	T/L	9.00	1076	42.4	312	12.3	15	19	3750	3450	8270	7610	830	830	120	120



## ML601



Recommended Vehicle Types & Positions

Tyre Size	PR	LI/SS	Type	Standard Rim	Overall Diameter		Section Width		Thread Depth		Load				Pressure			
					mm	inch	mm	inch	mm	inch	S(kg)	D(kg)	S(lbs)	D(lbs)	S(kPa)	D(kPa)	S(psi)	D(psi)
8.25R16	14	126/122K	T/T	6.50H	855	33.7	235	9.3	12	15	1700	1500	3750	3310	670	670	97	97
8.25R16	16	128/124K	T/T	6.50H	855	33.7	235	9.3	12	15	1800	1600	3970	3530	770	770	110	110
9.00R20	16	144/142K	T/T	7.00	1019	40.1	259	10.2	15.5	20	2800	2650	6170	5840	900	900	130	130
10.00R20	16	146/143L	T/T	7.50	1054	41.5	278	10.9	16.5	21	3000	2725	6610	6010	830	830	120	120
10.00R20	18	149/146K	T/T	7.50	1054	41.5	278	10.9	16.5	21	3250	3000	7165	6610	930	930	135	135
11.00R20	16	150/147K	T/T	8.00	1085	42.7	293	11.5	17	21	3350	3075	7385	6780	830	830	120	120
11.00R20	18	152/149K	T/T	8.00	1085	42.7	293	11.5	17	21	3550	3250	7830	7170	930	930	135	135
12.00R20	18	154/151K	T/T	8.50	1125	44.3	315	12.4	17.5	22	3750	3450	8270	7610	830	830	120	120
11R22.5	14	144/142M	T/L	8.25	1054	41.5	279	11.0	16.5	21	2800	2650	6175	5840	720	720	105	105
11R22.5	16	148/145M	T/L	8.25	1054	41.5	279	11.0	16.5	21	3150	2900	6945	6395	840	840	120	120
13R22.5	18	154/150L	T/L	9.75	1116	43.9	320	12.6	16.5	21	3750	3350	8270	7390	850	850	125	125



## ML603

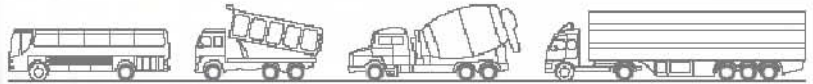


Recommended Vehicle Types & Positions

Tyre Size	PR	LI/SS	Type	Standard Rim	Overall Diameter		Section Width		Thread Depth		Load				Pressure			
					mm	inch	mm	inch	mm	inch	S(kg)	D(kg)	S(lbs)	D(lbs)	S(kPa)	D(kPa)	S(psi)	D(psi)
12.00R24	18	158/155K	T/T	8.50	1226	48.3	315	12.4	16	20	4250	3875	9375	8550	830	830	120	120
12.00R24	20	160/157K	T/T	8.50	1226	48.3	315	12.4	16	20	4500	4125	9925	9100	900	900	130	130

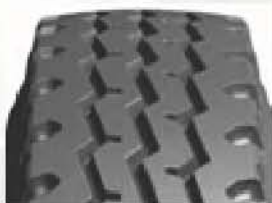


## ML680



Recommended Vehicle Types & Positions

Tyre Size	PR	LI/SS	Type	Standard Rim	Overall Diameter		Section Width		Thread Depth		Load				Pressure			
					mm	inch	mm	inch	mm	inch	S(kg)	D(kg)	S(lbs)	D(lbs)	S(kPa)	D(kPa)	S(psi)	D(psi)
+12.00R24	20	160/157K	T/T	8.50	1226	48.2	315	12.4	16	20	4511	4136	9925	9100	896	896	130	130



## ML818



Recommended Vehicle Types & Positions

Tyre Size	PR	LI/SS	Type	Standard Rim	Overall Diameter		Section Width		Thread Depth		Load				Pressure			
					mm	inch	mm	inch	mm	inch	S(kg)	D(kg)	S(lbs)	D(lbs)	S(kPa)	D(kPa)	S(psi)	D(psi)
+9.00R20	16	144/142K	T/T	7.00	1019	40.1	259	10.2	14/15	20	2800	2650	6170	5840	900	900	130	130
+10.00R20	16	146/143L	T/T	7.50	1054	41.5	278	10.9	15/16	21	3000	2725	6610	6010	830	830	120	120
+10.00R20	18	149/146K	T/T	7.50	1054	41.5	278	10.9	15/16	21	3250	3000	7165	6610	930	930	135	135
+11.00R20	18	152/149K	T/T	8.00	1085	42.7	293	11.5	15.5/16.5	21	3550	3250	7830	7170	930	930	135	135
+12.00R20	18	154/151K	T/T	8.50	1125	44.3	315	12.4	16/17	22	3750	3450	8270	7610	830	830	120	120



## ML268



Recommended Vehicle Types & Positions

Tyre Size	PR	LI/SS	Type	Standard Rim	Overall Diameter		Section Width		Thread Depth		Load				Pressure			
					mm	inch	mm	inch	mm	inch	S(kg)	D(kg)	S(lbs)	D(lbs)	S(kPa)	D(kPa)	S(psi)	D(psi)
315/80R22.5	18	154/151K	T/L	9.00	1076	42.3	312	12.2	21.5	26	3150	3450	6930	7590	760	760	110	110



## ML701

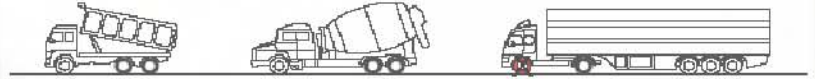


Recommended Vehicle Types & Positions

Tyre Size	PR	LI/SS	Type	Standard Rim	Overall Diameter		Section Width		Thread Depth		Load				Pressure			
					mm	inch	mm	inch	mm	inch	S(kg)	D(kg)	S(lbs)	D(lbs)	S(kPa)	D(kPa)	S(psi)	D(psi)
12R22.5	16	150/147L	T/L	9.00	1085	42.7	300	11.8	18	23	3350	3075	7390	6780	830	830	120	120
295/80R22.5	18	152/148L	T/L	9.00	1044	41.1	298	11.7	18	23	3550	3150	7825	6945	850	850	125	125
315/80R22.5	18	154/151L	T/L	9.00	1076	42.4	312	12.3	18	23	3750	3450	8270	7610	830	830	120	120
315/80R22.5	20	156/153K	T/L	9.00	1076	42.4	312	12.3	18	23	4000	3650	8820	8045	850	850	125	125



## ML706



Recommended Vehicle Types & Positions

Tyre Size	PR	LI/SS	Type	Standard Rim	Overall Diameter		Section Width		Thread Depth		Load				Pressure			
					mm	inch	mm	inch	mm	inch	S(kg)	D(kg)	S(lbs)	D(lbs)	S(kPa)	D(kPa)	S(psi)	D(psi)
9.00R20	16	144/142K	T/T	7.00	1019	40.1	259	10.2	16.5	21	2800	2650	6170	5840	900	900	130	130
10.00R20	18	149/146K	T/T	7.50	1054	41.5	278	10.9	18	23	3250	3000	7165	6610	930	930	135	135
11.00R20	18	152/149K	T/T	8.00	1085	42.7	293	11.5	18	23	3550	3250	7830	7170	930	930	135	135
11R22.5	14	144/142M	T/L	8.25	1054	41.5	279	11.0	15	19	2800	2650	6175	5840	720	720	105	105
11R22.5	16	148/145L	T/L	8.25	1054	41.5	279	11.0	18	23	3150	2900	6945	6395	840	840	120	120
11R24.5	14	146/143J	T/L	8.25	1104	43.5	279	11.0	20.5	26	3000	2725	6610	6005	720	720	105	105



## ML708



Recommended Vehicle Types & Positions

Tyre Size	PR	LI/SS	Type	Standard Rim	Overall Diameter		Section Width		Thread Depth		Load				Pressure			
					mm	inch	mm	inch	mm	inch	S(kg)	D(kg)	S(lbs)	D(lbs)	S(kPa)	D(kPa)	S(psi)	D(psi)
11R22.5	14	144/142M	T/L	8.25	1054	41.5	279	11.0	24	30	2800	2650	6175	5840	720	720	105	105
11R22.5	16	148/145L	T/L	8.25	1054	41.5	279	11.0	24	30	3150	2900	6945	6395	840	840	120	120
11R24.5	14	146/143J	T/L	8.25	1104	43.5	279	11.0	24	30	3000	2725	6610	6005	720	720	105	105
11R24.5	16	149/146J	T/L	8.25	1104	43.5	279	11.0	24	30	3250	3000	7160	6610	830	830	120	120
295/75R22.5	14	144/141K	T/L	9.00	1014	39.9	298	11.7	24	30	2800	2575	6175	5675	760	760	110	110
285/75R24.5	14	144/141K	T/L	8.25	1050	41.3	283	11.1	24	30	2800	2575	6175	5675	760	760	110	110

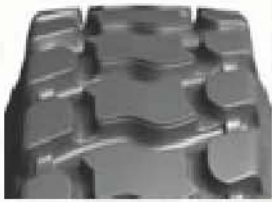


## ML712



Recommended Vehicle Types & Positions

Tyre Size	PR	LI/SS	Type	Standard Rim	Overall Diameter		Section Width		Thread Depth		Load				Pressure			
					mm	inch	mm	inch	mm	inch	S(kg)	D(kg)	S(lbs)	D(lbs)	S(kPa)	D(kPa)	S(psi)	D(psi)
11R22.5	14	144/142L	T/T	8.25	1054	41.5	279	11.0	20.6	26	2800	2650	6175	5840	720	720	105	105
11R22.5	16	148/145L	T/T	8.25	1054	41.5	279	11.0	20.6	26	3150	2900	6945	6395	840	840	120	120
11R24.5	14	146/143K	T/T	8.25	1104	43.5	279	11.0	20.6	26	3000	2725	6610	6005	720	720	105	105
11R24.5	16	149/146K	T/L	8.25	1104	43.5	279	11.0	20.6	26	3250	3000	7160	6610	830	830	120	120
295/75R22.5	14	144/141K	T/L	9.00	1014	39.9	298	11.7	20.6	26	2800	2575	6175	5675	760	760	110	110
285/75R24.5	14	144/141K	T/L	8.25	1050	41.3	283	11.1	20.6	26	2800	2575	6175	5675	760	760	110	110
315/70R22.5	18	152/148M (154/150L)	T/L	9.00	1016	40.0	308	12.1	19	24	3550	3150	7825	6945	850	850	125	125
295/80R22.5	18	152/148L	T/L	9.00	1044	41.1	298	11.7	20.6	26	3550	3150	7825	6945	850	850	125	125
315/80R22.5	18	152/148L	T/L	9.00	1076	42.4	312	12.3	20.6	26	3750	3450	8270	7610	830	830	120	120



## ML716

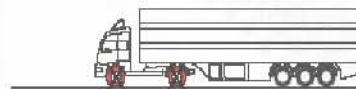


Recommended Vehicle Types & Positions

Tyre Size	PR	LI/SS	Type	Standard Rim	Overall Diameter		Section Width		Thread Depth		Load				Pressure			
					mm	inch	mm	inch	mm	inch	S(kg)	D(kg)	S(lbs)	D(lbs)	S(kPa)	D(kPa)	S(psi)	D(psi)
12.00R20	18	154/151K	T/T	8.50	1125	44.3	315	12.4	22	28	3750	3450	8270	7610	830	830	120	120
13R22.5	18	154/150K	T/L	9.75	1124	44.3	320	12.6	22	28	3750	3350	8270	7390	850	850	125	125



## ML718



Recommended Vehicle Types & Positions

Tyre Size	PR	LI/SS	Type	Standard Rim	Overall Diameter		Section Width		Thread Depth		Load				Pressure			
					mm	inch	mm	inch	mm	inch	S(kg)	D(kg)	S(lbs)	D(lbs)	S(kPa)	D(kPa)	S(psi)	D(psi)
385/65R22.5	20	158/L (160K)	T/L	11.75	1072	42.2	389	15.3	18	23	4500	-	9920	-	900	-	130	-
425/65R22.5	18	165K	T/L	12.25	1124	44.3	422	16.6	18	23	5150	-	11400	-	830	-	120	-



## ML728



Recommended Vehicle Types & Positions

Tyre Size	PR	LI/SS	Type	Standard Rim	Overall Diameter		Section Width		Thread Depth		Load				Pressure			
					mm	inch	mm	inch	mm	inch	S(kg)	D(kg)	S(lbs)	D(lbs)	S(kPa)	D(kPa)	S(psi)	D(psi)
215/75R17.5	14	126/124M	T/L	6.00	767	30.2	211	8.3	15	19	1700	1600	3750	3530	700	700	101	101
215/75R17.5	16	135/133J	T/L	6.00	767	30.2	211	8.3	15	19	2180	2060	4805	4540	865	865	125	125
235/75R17.5	18	143/141J	T/L	6.75	797	31.4	233	9.2	15	19	2725	2575	6005	5675	865	865	125	125
225/70R19.5	12	125/123M	T/L	6.75	811	31.9	226	8.9	15	19	1650	1550	3640	3415	660	660	95	95
245/70R19.5	16	136/134M	T/L	7.50	839	33.0	248	9.8	15	19	2240	2120	4940	4675	760	760	110	110



## ML798



Recommended Vehicle Types & Positions

Tyre Size	PR	LI/SS	Type	Standard Rim	Overall Diameter		Section Width		Thread Depth		Load				Pressure			
					mm	inch	mm	inch	mm	inch	S(kg)	D(kg)	S(lbs)	D(lbs)	S(kPa)	D(kPa)	S(psi)	D(psi)
10.00R20	18	149/146L	T/T	7.5	1054	41.5	278	10.9	18	23	3250	3000	7150	6600	930	930	134	134
11.00R20	18	152/149F	T/T	8.0	1085	42.7	293	11.5	18.5	23.6	3550	3250	7810	7150	930	930	134	134
12.00R20	18	154/151G	T/T	8.5	1125	44.2	315	12.4	20	26	3750	3450	8250	7590	830	830	120	120



## ML850



Recommended Vehicle Types & Positions

Tyre Size	PR	LI/SS	Type	Standard Rim	Overall Diameter		Section Width		Thread Depth		Load				Pressure			
					mm	inch	mm	inch	mm	inch	S(kg)	D(kg)	S(lbs)	D(lbs)	S(kPa)	D(kPa)	S(psi)	D(psi)
12.00R24	20	160/157K	T/T	8.50	1238	48.7	315	12.4	20.5	26	4500	4125	9920	9090	900	900	130	130



## ML866



Recommended Vehicle Types & Positions

Tyre Size	PR	LI/SS	Type	Standard Rim	Overall Diameter		Section Width		Thread Depth		Load				Pressure			
					mm	inch	mm	inch	mm	inch	S(kg)	D(kg)	S(lbs)	D(lbs)	S(kPa)	D(kPa)	S(psi)	D(psi)
10.00R20	16	146/143K	T/T	7.5	1054	41.5	278	10.9	17/18	23	3000	2725	6600	5995	830	830	120	120
10.00R20	18	149/146K	T/T	7.5	1054	41.5	278	10.9	17/18	23	3250	3000	7150	6600	930	930	134	134
11.00R20	18	152/149K	T/T	8.0	1085	42.7	293	11.5	18.5/19.5	25	3550	3250	7810	7150	930	930	134	134
12.00R20	18	154/151K	T/T	8.5	1125	44.3	315	12.4	20/21	26	3750	3450	8250	7590	830	830	120	120



## ML868



Recommended Vehicle Types & Positions

Tyre Size	PR	LI/SS	Type	Standard Rim	Overall Diameter		Section Width		Thread Depth		Load				Pressure			
					mm	inch	mm	inch	mm	inch	S(kg)	D(kg)	S(lbs)	D(lbs)	S(kPa)	D(kPa)	S(psi)	D(psi)
8.25R16	14	126/122L	T/L	6.50H	855	33.6	235	9.2	13	16	1705	1500	3751	3300	670	670	97	97
9.00R20	16	144/142K	T/L	7.0	1019	40.1	259	10.1	14/15	19	2800	2650	6160	5830	900	900	130	130
10.00R20	16	146/143K	T/L	7.5	1054	41.5	278	10.9	15	19	3000	2725	6600	5995	830	830	120	120
10.00R20	18	149/146K	T/L	7.5	1054	41.5	278	10.9	16	20	3250	3000	7150	6600	930	930	134	134
11.00R20	18	152/149K	T/L	8.0	1085	42.7	293	11.5	16.5	20	3550	3250	7810	7150	930	930	134	134
12.00R20	18	154/151K	T/L	8.5	1125	44.3	315	12.4	17	21	3750	3450	8250	7590	830	830	120	120

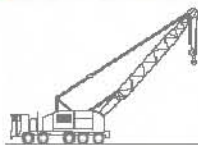
# EARTHMOVER ( RADIAL )



- Suitable for the toughest OTR applications globally.
- Manufactured to the highest specification resulting to top quality radial OTR tyre with significant product differential and added value.
- Able to compete with the world's leading tyres.



**MLV01**



**Recommended Vehicle Types & Positions**

Tyre Size	LI/SS	TRA Code	Star Rating	Type	Recom. Rim (inch)	Overall Diameter		Overall Width		Pattern Depth	
						mm	inch	mm	inch	mm	inch
<b>14.00R24</b> (385/95R24)	170F	Highway Service	<b>**</b>	T/T	11.00W	1360	53.5	375	14.7	26	1.0
<b>14.00R25</b> (385/95R25)	170F	Highway Service	<b>**</b>	T/L	9.50/1.7CR	1360	53.5	382	15.0	26	1.0
<b>16.00R25</b> (445/95R25)	174F	Highway Service	<b>**</b>	T/L	11.25/2.0	1488	58.6	438	17.2	28	1.1
<b>20.5R25</b> (525/80R25)	177F	Highway Service	<b>*</b>	T/L	17.00/2.0	1504	59.2	516	20.3	31	1.22



**ML201**



**Recommended Vehicle Types & Positions**

Tyre Size	LI/SS	TRA Code	Star Rating	Type	Recom. Rim (inch)	Overall Diameter		Overall Width		Pattern Depth	
						mm	inch	mm	inch	mm	inch
<b>20.5R25</b>	177B	E2/L2/G2	<b>*/**</b>	T/L	17.00/2.0	1507	59.3	522	20.6	28	1.1



**ML202**



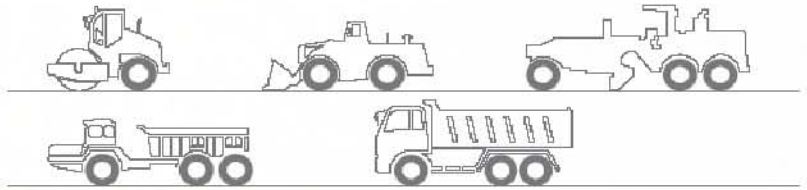
**Recommended Vehicle Types & Positions**

Tyre Size	LI/SS	TRA Code	Star Rating	Type	Recom. Rim (inch)	Overall Diameter		Overall Width		Pattern Depth	
						mm	inch	mm	inch	mm	inch
<b>14.00R24</b>	170f	E2/G2/L2	<b>**</b>	T/L	11.00/W	1360	53.5	375	14.76	26	1.00
<b>17.5R25</b>	153A8	E2/G2/L2	<b>**</b>	T/L	16	1369	63.5	436	17.16	28	1.10
<b>20.5R25</b>	161A8/193A2	E2/G2/L2	<b>**</b>	T/L	17.00/2.0	1491	58.7	516	20.31	31	1.22
<b>23.5R25</b>	170A8/201A2	E2/G2/L2	<b>**</b>	T/L	19.50/2.5	1613	63.5	596	23.46	34	1.34





## ML301

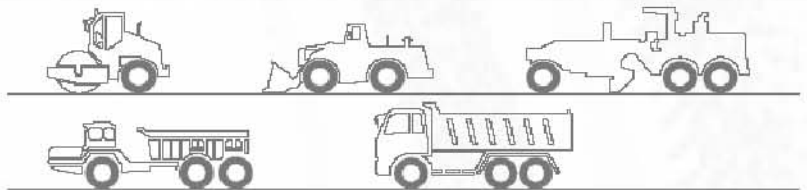


Recommended Vehicle Types & Positions

Tyre Size	LI/SS	TRA Code	Star Rating	Type	Recom. Rim (inch)	Overall Diameter		Overall Width		Pattern Depth	
						mm	inch	mm	inch	mm	inch
17.5R25	167B	E3/L3	**	T/L	14.00/1.5	1339	52.8	449	17.7	29	1.14
20.5R25	177B	E3/L3	**	T/L	17.00/2.0	1499	59.0	517	23.9	31	1.34
23.5R25	185B	E3/L3	**	T/L	19.50/2.5	1623	63.9	608	23.9	34	1.34
26.5R25	193B	E3/L3	**	T/L	22.00/3.0	1748	68.8	679	26.7	37	1.46
29.5R25	200B	E3/L3	**	T/L	25.00/3.5	1886	74.3	763	30	40	1.57



## ML302



Recommended Vehicle Types & Positions

Tyre Size	LI/SS	TRA Code	Star Rating	Type	Recom. Rim (inch)	Overall Diameter		Overall Width		Pattern Depth	
						mm	inch	mm	inch	mm	inch
23.5R25	185B	E3/L3	**	T/L	19.50/2.5	1623	63.9	608	23.9	34	1.34
26.5R25	193B	E3/L3	**	T/L	22.00/3.0	1748	68.8	679	26.7	37	1.46
29.5R25	200B	E3/L3	**	T/L	25.00/3.5	1893	74.5	763	30	44	1.74



## ML303

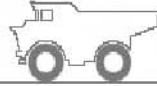


Recommended Vehicle Types & Positions

Tyre Size	LI/SS	TRA Code	Star Rating	Type	Recom. Rim (inch)	Overall Diameter		Overall Width		Pattern Depth	
						mm	inch	mm	inch	mm	inch
33.25R25	209B	E3	**	T/L	27.00/3.5	2097	82.55	859	33.82	42.5	1.67



## ML401



### Recommended Vehicle Types & Positions

Tyre Size	LI/SS	TRA Code	Star Rating	Type	Recom. Rim (inch)	Overall Diameter		Overall Width		Pattern Depth	
						mm	inch	mm	inch	mm	inch
18.00R33	191B	E4	**	T/L	13.00/2.5	1875	73.8	511	20.1	54	2.13
21.00R35	201B	E4	**	T/L	15.00/3.0	2050	80.9	590	23.3	61	2.41
24.00R35	209B	E4	**	T/L	17.00/2.5	2170	85.6	666	26.3	68	2.68



## ML402

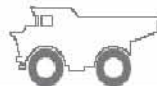


### Recommended Vehicle Types & Positions

Tyre Size	LI/SS	TRA Code	Star Rating	Type	Recom. Rim (inch)	Overall Diameter		Overall Width		Pattern Depth	
						mm	inch	mm	inch	mm	inch
18.00R33	191B	E4	**	T/L	13.00/2.5	1867	73.5	516	20.3	54	2.13



## ML403



### Recommended Vehicle Types & Positions

Tyre Size	LI/SS	TRA Code	Star Rating	Type	Recom. Rim (inch)	Overall Diameter		Overall Width		Pattern Depth	
						mm	inch	mm	inch	mm	inch
24.00R35	209B	E4	**	T/L	17.00/3.5	2196	84.46	662	26.06	59	2.32



## ML404

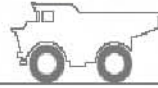


### Recommended Vehicle Types & Positions

Tyre Size	LI/SS	TRA Code	Star Rating	Type	Recom. Rim (inch)	Overall Diameter		Overall Width		Pattern Depth	
						mm	inch	mm	inch	mm	inch
23.5R25	185B	E4/L4	**	T/L	19.50/2.5	1655	65.2	603	23.7	49	1.93



## ML501



### Recommended Vehicle Types & Positions

Tyre Size	LI/SS	TRA Code	Star Rating	Type	Recom. Rim (inch)	Overall Diameter		Overall Width		Pattern Depth	
						mm	inch	mm	inch	mm	inch
17.5R25	182A2	L5	**	T/L	14.00/1.5	454	17.87	1406	55.35	61.5	2.42
20.5R25	193A2	L5	**	T/L	17.00/2.0	534	21.02	1530	60.24	70.5	2.77
23.5R25	201A2	L5	**	T/L	19.50/2.5	612	24.09	1662	65.43	76.5	3.01
26.5R25	209A2	L5	**	T/L	22.00/3.0	686	27.01	1801	70.91	85.5	3.37
29.5R25	216A2	L5	**	T/L	25.00/3.5	764	30.08	1902	74.88	92.5	3.64



## ML502



### Recommended Vehicle Types & Positions

Tyre Size	LI/SS	TRA Code	Star Rating	Type	Recom. Rim (inch)	Overall Diameter		Overall Width		Pattern Depth	
						mm	inch	mm	inch	mm	inch
18.00R25	204A2	L5S	**	T/L	15.00/1.75	500	18.50	1498	56.90	72.5	2.90
17.5R25	182A2	L5S	**	T/L	14.00/1.5	456	17.95	1412	55.59	69.5	2.73
20.5R25	193A2	L5S	**	T/L	17.00/2.0	538	21.18	1538	60.55	78.5	3.09
23.5R25	201A2	L5S	**	T/L	19.50/2.5	618	24.33	1672	65.83	88.5	3.48
26.5R25	209A2	L5S	**	T/L	22.00/3.0	690	27.16	1808	71.18	100.5	3.96
29.5R25	216A2	L5S	**	T/L	25.00/3.5	768	30.23	1910	75.20	110.5	4.35



# EARTHMOVER (BIAS)



- Provide exceptional traction, protection and long wear.
- Provide stability and operator comfort.
- Digs in and help move heavy cargo quickly up steep grades.
- Help operators fill bigger buckets for bigger loads.



## H548

Tyre Size	PR	TRA Code	Type	Standard Rim	Overall Diameter		Section Width		Thread Depth		Max Load (kg/kpa)	
					mm	inch	mm	inch	mm	inch	10km/h	50km/h
1800-25	32	E4	TL	13.00	1671	65.7	495	19.4	54	2.1	15000/750	8750/575
1800-33	32	E4	TL	13.00	1820	71.6	495	19.4	54	2.1	17500/750	10000/570
1800-33	36	E4	TL	13.00	1820	71.6	495	19.4	54	2.1	18500/850	10600/625
2400-35	42	E4	TL	17.00	2175	85.6	650	25.5	57	2.2	29000/750	16500/550



## H558

Tyre Size	PR	TRA Code	Type	Standard Rim	Overall Diameter		Section Width		Thread Depth		Max Load (kg/kpa)	
					mm	inch	mm	inch	mm	inch	10km/h	50km/h
2700-49	48	E4	TL	19.50	2703	106	735	28	57	2.2	43700/775	25000/575



## H568

Tyre Size	PR	TRA Code	Type	Standard Rim	Overall Diameter		Section Width		Thread Depth		Max Load (kg/kpa)	
					mm	inch	mm	inch	mm	inch	10km/h	50km/h
2700-49	48	E4	TL	19.50	2703	106	735	28	57	2.2	43700/775	25000/575
3300-51	58	E4	TL	24.00	3056	120	895	35	57	2.2	61500/750	35500/575
3600-51	58	E4	TL	26.00	3165	124	990	38	82	3.2	71000/675	41200/525
3700-57	68	E4	TL	27.00	3449	135	1069	42	82	3.2	82500/575	51500/525
4000-57	68	E4	TL	29.00	3594	141	1095	43	82	3.2	92500/725	54500/550



## H508

Tyre Size	PR	TRA Code	Type	Standard Rim	Overall Diameter		Section Width		Thread Depth		Max Load (kg/kpa)	
					mm	inch	mm	inch	mm	inch	10km/h	50km/h
1400-24	12	E3/L3	TT/TL	10/00	1370	53.9	375	14.7	25	0.9	6300/425	3350/275
	16										7300/550	4000/375
	20										8500/700	4625/475
	24										9500/850	5150/575
	28										10000/925	5600/650
	32										10375/925	6025/750
1400-25	12	E3/L3	TT/TL	10.00	1370	53.9	375	14.7	25	0.9	6300/425	3350/275
	16										7300/550	4000/375
	20										8500/700	4625/475
	24										9500/850	5150/575
	28										10000/925	5600/650
	32										10375/925	6025/750
15.5-25	8	E3/L3	TT/TL	12.00	1275	50.1	395	15.5	24.5	0.9	4250/250	2575/175
	12										4875/325	3000/225
	16										5600/400	3250/250
	20										8700/625	4300/400
1600-24	20	E3/L3	TT/TL	11.25	1490	58.6	430	16.9	26	1.0	9750/550	5450/400
	24										10600/650	6000/475
	28										11500/750	6700/575
	32										12500/875	7300/650
1600-25	36	E3/L3	TT/TL	11.25	1490	58.6	430	16.9	26	1.0	13600/975	7750/725
	20										9750/550	5450/400
	24										10600/650	6000/475
	28										11500/750	6700/575
	32										12500/875	7300/650
17.5-25	12	E3/L3	TT/TL	14.00	1350	53.1	445	17.5	26	1.0	6150/350	3650/225
	16										7300/475	4250/300
	20										8250/575	5000/400
	24										9100/625	5550/425
1800-25	24	E3/L3	TT/TL	13.00	1615	63.5	495	19.4	30	1.1	12500/550	7300/425
	28										13600/650	8000/500
	32										15000/750	8750/575
	36										16000/850	9250/625
	40										17000/950	9750/700
20.5-25	12	E3/L3	TT/TL	17.00	1490	58.6	520	20.4	29	1.1	6700/250	4500/200
	16										8250/350	5450/275
	20										9500/450	6000/325
	24										10300/525	6700/400
	28										11500/625	7500/475

Tyre Size	PR	TRA Code	Type	Standard Rim	Overall Diameter		Section Width		Thread Depth		Max Load (kg/kpa)	
					mm	inch	mm	inch	mm	inch	10km/h	50km/h
23.5-25	12	E3/L3	TT/TL	19.50	1615	63.5	595	23.4	32	1.2	8000/225	5300/175
	16										9500/300	6150/225
	20										10900/375	7300/300
	24										12500/475	8000/350
26.5-25	28	E3/L3	TT/TL	22.00	1750	68.8	675	26.5	35	1.3	13600/550	8750/400
	20										13200/350	8250/250
	24										14000/400	9250/300
	28										15500/475	10000/350
29.5-25	32	E3/L3	TL	25.00	1875	73.8	750	29.5	36.5	1.4	17000/550	11200/425
	22										15000/325	10000/250
	24										16200/375	11000/300
	28										17500/425	11500/325
29.5-29	32	E3/L3	TL	25.00	1975	77.7	750	29.5	35	1.3	18800/475	12800/375
	34										21200/525	14000/400
40	23600/625	15000/475										



## H518

Tyre Size	PR	TRA Code	Type	Standard Rim	Overall Diameter		Section Width		Thread Depth		Max Load (kg/kpa)	
					mm	inch	mm	inch	mm	inch	10km/h	50km/h
37.25-35	36	E3	TL	31.00	2390	94.0	945	37.2	46.5	1.8	30700/450	19500/325



## H538

Tyre Size	PR	TRA Code	Type	Standard Rim	Overall Diameter		Section Width		Thread Depth		Max Load (kg/kpa)	
					mm	inch	mm	inch	mm	inch	10km/h	50km/h
25.65-25	20	E3/L3	TL	20.00	1485	58.4	635	25.0	35	1.3	9750/400	5800/275



## H828

Tyre Size	PR	TRA Code	Type	Standard Rim	Overall Diameter		Section Width		Thread Depth		Max Load (kg/kpa)	
					mm	inch	mm	inch	mm	inch	10km/h	50km/h
10-16.5	10	Skid Steer	TL	8.25	773	30.4	264	10.3	14	0.5	2135/520	-
	12										2375/620	-
12-16.5	10	Skid Steer	TL	9.75	831	32.7	307	12.0	17	0.6	3800/450	-
	12										4045/550	-



## H578

Tyre Size	PR	TRA Code	Type	Standard Rim	Overall Diameter		Section Width		Thread Depth		Max Load (kg/kpa)	
					mm	inch	mm	inch	mm	inch	10km/h	50km/h
1300-24	8	G2L2	TT/TL	8.00	1280	50.3	330	12.9	24	0.9	4375/300	2060/200
	12										5600/450	2725/300
	16										6500/600	3300/450
	18										7000/650	3500/500
1400-24	8	G2L2	TT/TL	8.00	1350	53.1	360	14.1	25	0.9	4875/275	2500/175
	12										6300/425	3075/275
	16										7300/550	3650/375
	20										8500/700	4500/475
16.00-24	8	G2L2	TT/TL	10.00	1460	57.4	425	16.7	28.5	1.1	6000/300	3250/200
	12										7100/325	3650/225
	16										8250/425	4500/325
	18										8750/450	5000/350
17.5-25	8	G2L2	TT/TL	14.00	1350	53.1	445	17.5	25.5	1.0	-	2125/125
	12										-	2900/200
	16										-	3350/275
	20										-	3650/325
20.5-25	12	G2L2	TT/TL	17.00	1490	58.6	520	20.4	28.5	1.1	-	3550/175
	16										-	4000/225
	20										-	4500/275
	24										-	5000/300
23.5-25	12	G2L2	TT/TL	19.50	1615	63.5	595	23.4	31	1.2	-	4000/150
	16										-	4750/200
	20										-	5450/250
	24										-	6000/300





## H598

Tyre Size	PR	TRA Code	Type	Standard Rim	Overall Diameter		Section Width		Thread Depth		Max Load (kg/kpa)	
					mm	inch	mm	inch	mm	inch	10km/h	50km/h
15.5-25	8	G2/L2	TT/TL	12.00	1275	50.1	395	15.5	24.5	0.9	-	1950/150
	12										-	2650/225
	16										-	3100/275
	20										-	3625/325



## H528

Tyre Size	PR	TRA Code	Type	Standard Rim	Overall Diameter		Section Width		Thread Depth		Max Load (kg/kpa)	
					mm	inch	mm	inch	mm	inch	10km/h	50km/h
26.5-26	32	L5	TL	22.00	1798	70.7	675	26.5	87.5	3.4	17000/550	11200/425
29.5-29	40	L5	TL	25.00	2023	79.6	750	29.5	95	3.7	23600/625	15000/475
35/65-33	36	L5	TL	28.00	2078	81.8	890	35.0	116.5	4.5	23600/525	14500/375
45/65-45	58	L5	TL	36.00	2733	107	1140	44.8	120	4.7	63630/675	-
52/80-57	68	L4	TL	36.00	3579	140	1321	52.0	75.5	2.9	92616/620	-



## H588

Tyre Size	PR	TRA Code	Type	Standard Rim	Overall Diameter		Section Width		Thread Depth		Max Load (kg/kpa)	
					mm	inch	mm	inch	mm	inch	10km/h	50km/h
1200-24	20	L5S	TL	8.50	1245	49.0	315	12.4	-	-	6900/825	3750/550
1400-24	20	L5S	TL	10.00	1370	53.9	375	14.7	-	-	8500/700	4625/475
1800-25	40	L5S	TL	13.00	1671	65.7	495	19.4	-	-	17000/950	9750/700
26.5-26	32	L5S	TL	22.00	1798	70.7	675	26.5	-	-	17000/550	11200/425
29.5-26	32	L5S	TL	25.00	2018	79.4	750	29.5	-	-	18800/475	12800/375

# AGRICULTURE TYRES



- Good handling, safe on steep slopes and absorb vibrations while travelling.
- Efficient self-cleaning and reduced tyre wear.
- Excellent course stability.
- Increased rigidity and compactness for transporting higher loads.



## H418

Tyre Size	PR	TRA Code	Standard Rim	Allowable Rim	Overall Diameter	Section Width	Pattern Depth	Max Load (kg)	Inflation (Kpa)
					mm	mm	mm	D/S	D/S
6.50-16	8	F2	4.50E	4.00E , 5.00F	760	175	15.5	735	420
6.00-16	8	F2	4.00E	4.50E , 5.00F	740	160	14.5	675	450
5.00-15	6	F2	4J	4.00E , 3.00D	665	140	11.5	465	420
4.00-16	4	F2	3.00D	2.50C	640	110	10.0	300	340
4.00-14	4	F2	3.00D	2.50C	590	110	8.0	350	500
4.00-12	4	F2	3.00D	2.50C	535	110	6.5	250	340



## H518

Tyre Size	PR	TRA Code	Standard Rim	Allowable Rim	Overall Diameter	Section Width	Pattern Depth	Max Load (kg)	Inflation (Kpa)
					mm	mm	mm	D/S	D/S
23.1-26	14	R1	DW20	W15L , DW16	1605	587	42	3970	200
	12							3610	170
	10							3245	140
18.4-30	12	R1	W16L	W15L , DW16	1550	467	41	3180	230
	10							2815	180
16.9-34	10	R1	W15L	DW14 , W14L	1585	430	39	2605	200
16.9-30	12	R1	W16L	W14 , DW14L	1485	430	39	2730	240
	10							2455	200
15.5-38	10	R1	W14L	DW14	1570	395	37	2320	200
	8							2060	180
14.9-24	10	R1	W13	W12 , DW12	1265	378	38	1990	230
	8							1760	180
12.4-28	8	R1	W11	W10 , W10H	1260	315	32	1510	230
12.4-24	8	R1	W11	W10 , W10H	1160	315	50	1415	230
9.5-24	8	R1	W8	W7 , W8H	1115	240	27	1110	280
9.5-20	8	R1	W8	W7 , W8H	950	240	26	955	280
8.3-24	6	R1	W7	W6	995	210	25	810	240
8.3-20	6	R1	W7	W6	2895	210	24	695	240
7.50-20	6	R1	5.50F	5.00F , 6.00F	910	205	22	760	210
7.50-16	6	R1	5.50F	5.00F , 6LB	810	205	21.5	650	210
6.00-12	6	R1	4.50E	5.00F	640	165	22	405	250

# INDUSTRIAL TYRES



## H818

Tyre Size	PR	Standard Rim	Overall Diameter	Section Width	Pattern Depth	Max Load	
			mm	mm	mm	kg	Kpa
8.25-15	14	6.5	840	235	16.5	3185	830
28X9-15	14	7.0	706	220	15.5	2575	970
8.25-12	12	6.5	765	235	16	2585	720
7.00-12	12	5.00S	676	190	15.5	2005	860
7.00-9	10	5.00S	590	190	14	1685	860
6.50-10	10	5.00F	590	175	14.5	1400	790
6.00-9	10	4.00E	540	160	12.5	1275	860
5.00-8	8	3.50D	470	137	13.5	845	790

## WARRANTY INFORMATION

### ELIGIBILITY

This policy applies to the original consumer/owner or user of any new Miller Tyre. Eligible Tyres must be used on the vehicle on which they were originally installed according to the vehicle manufacturer's recommendation.

### COVERAGE

(1) The new original usable tread has worn down to 2/32" remaining (i.e., worn down to the top of the built-in indicators in the tread grooves),

(2) before six years from the date of manufacture for every passenger and light truck tyre (whichever comes first), any Miller tyre covered by this warranty becomes unusable due to a material or workmanship condition, Miller will do either of the following:

(a) during the first 2/32" of the original usable tread, Miller will replace such tyre with a comparable new Miller tyre free of charge. Applicable taxes on the new tyre and costs of mounting and balancing service are payable by the owner.

(b) after the first 2/32" of the original usable tread, a credit will be given toward the purchase of a comparable new Miller tyre in proportion of the original usable tread remaining on the returned tyre to the original usable tread of the new tyre. Applicable taxes and cost of mounting and balancing service are payable by the owner.

(c) adjustment on out-of-balance or out-of-round tyre is allowed only during the first 2/32".

### WHAT IS NOT COVERED

(1) This limited warranty is applicable only in EC, and any tyres used or equipped on a vehicle registered or operated outside of EC are not covered by this warranty

(2) Tyres branded or marked "non-adjustable (NA)" or "blemished (Blem)" or DOT/Serial numbers previously cut will not be adjusted.

(3) Tyre damage or irregular wear due to the ff:

(a) Road hazards, including puncture, cut, impact break, buldge, snag, stone drill, and collision

(b) Continued use while running flat or under acute under inflation

(c) Improper use or operation, without limitation, improper inflation pressure, overloading, use of an improper rim, vehicle misalignment, tyre/wheel assembly imbalance or other vehicle conditions, worn suspension components, improper mopunting or de-mounting, misuse, misapplication, fire or other externally generated heat, water or other material trapped inside the tyre during mounting, tyre alteration, recing, or competition purposes, improper inserting of sealant, balance or filler materials.

(d) Improper repair

(4) Any tyre worn beyond the wear bars (less than 2/32" remaining tread)

(5) The cost of application taxes and mounting and balance services

(6) Ozone or weather cracking on tires over four (4) years from the date of manufacture

(7) Ride disturbance claims submitted after the first 2/32" tread wear

(8) Loss of time or use, inconvenience, or any incidental or consequential damage.

### OWNER'S OBLIGATIONS

(1) The owner must present the tyre to the Miller dealer from which the original purchase was made

(2) Present proof of purchase to the satisfaction of the dealer

(3) Complete and sign a Miller warranty claim form, which is available at any authorized dealer and online.

(4) Pay the amounts due on a new tyre, less the amount of credit, including taxes, mounting and balancing charges or the cost of other services ordered.

## EXCLUSIVE DISTRIBUTORSHIP

### Article 1. Appointment

During the effective period of the Agreement, Supplier hereby grants to Distributor the right to sell Products in Territory and Distributor accepts and assumes such appointment for the sale and distribution of Products in Territory.

### Article 2. Privity

The relationship hereby established between Supplier and Distributor, during the effective period of the Agreement, shall be solely that of Seller and Buyer, and Distributor shall under no circumstances be considered to be the agent or legal representative of Supplier and shall have no right or authority to contract in the name of, or to create a liability against, the Supplier.

### Article 3. Products

The products covered under the Agreement shall expressly be confined to products supplied by Supplier with the registered trademark "Miller"(hereinafter referred to as Products).

### Article 4. Territory

Distributor shall resell Products only in assigned Territory and shall not resell or export Products outside assigned Territory during the effective period of the Agreement.

### Article 5. Initial Order and Minimum Purchase

The agreement shall become effective after a trial period of 1 year from the date of receipt of the first order as per agreed upon. Distributor shall, during the effective period of the Agreement, purchase from Supplier not less than the agreed volume within one year, and Products are considered purchased when payment received and shipped by Supplier. In case Distributor fails to attain the minimum yearly purchase amount, Supplier reserves the right to cancel the Agreement unconditionally or appoint another distributor in the territory.

### Article 6. Distributor requirements

Distributor shall demonstrate the availability of a warehouse space, reasonable office space and hire at least one quality Sales Person for the promotion and marketing of the products.

### Article 7. Information and Report

Both Supplier and Distributor shall from time to time and /or on the request of either party furnish each other with information and market reports to promote the sale of Products as much as possible. Distributor shall give Supplier such reports as inventory, market conditions and other activities of Distributor.

### Article 8. Sales Promotion

Distributor shall appoint a full time Sales Person for the promotion of the products on his own account. Distributor shall exert his best efforts in advertising and promoting the sale of Products throughout Territory in an effective manner on his own account. The Distributor shall maintain sufficient stocks at all times to be able to cater to the local demands and be able to operate a trading Division for the sale of the products.

### Article 9. Duration

The Agreement shall be valid and remain in force for a period of one (1) year commencing from the date of the signing of Agreement by both Supplier and Distributor subject to the receipt of the first minimum order as per agreed upon along with the advance payment required.

#### Article 10. Cancellation of Termination

In case there is any breach of the provisions under the Agreement by either party during the effective period of the Agreement, the parties shall first of all try to settle the matter in question as soon and amicable as possible to mutual satisfaction. Unless settlement is reached within thirty (30) days after the notification in writing of the other party, such other party shall have the right to cancel the Agreement and the loss and damage sustained thereby shall be indemnified by the party responsible for such breach.

Further in the event of bankruptcy, insolvency, dissolution, modification, consolidation, receivership proceedings affecting the operation of business or discontinuation of business for any reason and/or reorganization by the Distributor, The Seller hereto shall have the absolute right to terminate the Agreement.

#### Article 11. Force Majeure

Neither party shall be liable to the other for the failure of delay in the performance of any of his obligations under the Agreement when such failure or delay is due to fire, flood, strike, riots, wars, embargoes, governmental laws, orders or regulations, storms or other similar or different contingencies beyond the reasonable control of the respective parties. If, as a result of legislation or governmental action, any party or parties are precluded from receiving any benefit to which they are entitled hereunder, the parties shall review the provisions of the Agreement so as to try the best possible efforts to restore the party or parties to the same relative positions as previously obtained hereunder.

#### Article 12. Assignments

Neither party shall assign transfer or otherwise dispose of the Agreement in whole or in part or any right hereunder to any person, firm or corporation without the prior written consent of the other party.

#### Article 13. Secrecy

All information made available under the Agreement shall be kept in strict confidence from any third party without prior consent in writing of the other party. The only exception, however, shall be the disclosures forced by the laws, orders or regulations of Governments or Organizations having the necessary authorities and such disclosures shall not be deemed to constitute a violation of this Article under the Agreement.

#### Article 14. Arbitration

All disputes arising out of the performance of, or relating to the Agreement, shall be settled amicably through negotiation, In case no settlement can be reached through negotiation, the case shall be finally settled by arbitration to be held in U.A.E as per the laws of the country. The award rendered by the arbitrator(s) shall be final and binding upon both parties.

**ISO 9001**  
Quality Assurance  
System Certification

**GCC**  
Gulf Cooperation Council  
Certification

**Q1**  
Ford-Lio Ho  
Q1 Quality Award

  
Japanese Industry  
Standard Certification

**QS-9000**  
American Big Three Car Makers'  
Quality System Certification

  
EEC Tire Safety  
Standard

**ISO 14001**  
Environmental  
Management System  
Certification

**TPM**  
Japanese Total  
Production Maintenance  
Award

**DOT**  
U.S. Dept. Of Transportation  
Standard



***Distributed Worldwide by:***

***SOBATI TYRES LTD.***

***[www.miller.cn.com](http://www.miller.cn.com)***

***[sales@miller.cn.com](mailto:sales@miller.cn.com)***